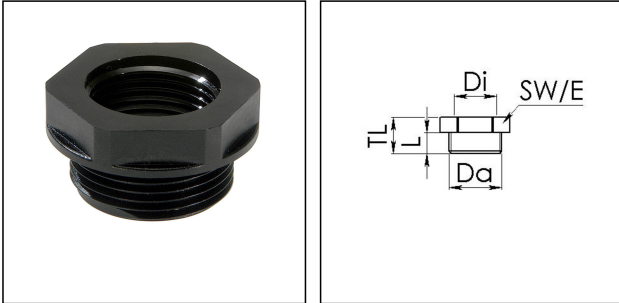


EX-KRM 32/16

Ex-reduction adaptor, polyamide, M32-M16



Products may differ in size, colour and appearance to those shown. If you require further information or customisation, please contact us directly.



Material	Polyamide, fibre reinforced
Material sealing gasket	EPDM
Temp. range min	-40 °C
Temp. range max	75 °C
Protection class	IP66 / IP68 (5 bar 30 min)
Type of protection	Ex eb, Ex tb
Ex-Certificate	IECEX, ATEX
Thread type outer	M
Ø outer thread	32
Lead outer	1,5
Length screw-in thread L	12 mm
Thread type inner	M
Ø inner thread	16
Lead inner	1,5
Key width SW	36 mm
Collar diameter (E)	41 mm
Total length TL	19 mm
Form	B
Product Color	RAL 9005
Equipment	Incl. connection thread gasket
Order no. RAL 9005	10064726
Type	EX-KRM 32/16
Packing unit	50
EAN number	4007685647267
Tariff number	39269097

Your Contact:

WISKA Hoppmann GmbH

Kisdorfer Weg 28 · 24568 Kaltenkirchen · Germany

☎ +49-4191-508-0 · 📠 +49-4191-508-209

contact@wiska.de · www.wiska.com

ETIM-Classification

EC000938

Recommended accessories

EMUG 32 BK



10061784

27.03.2024

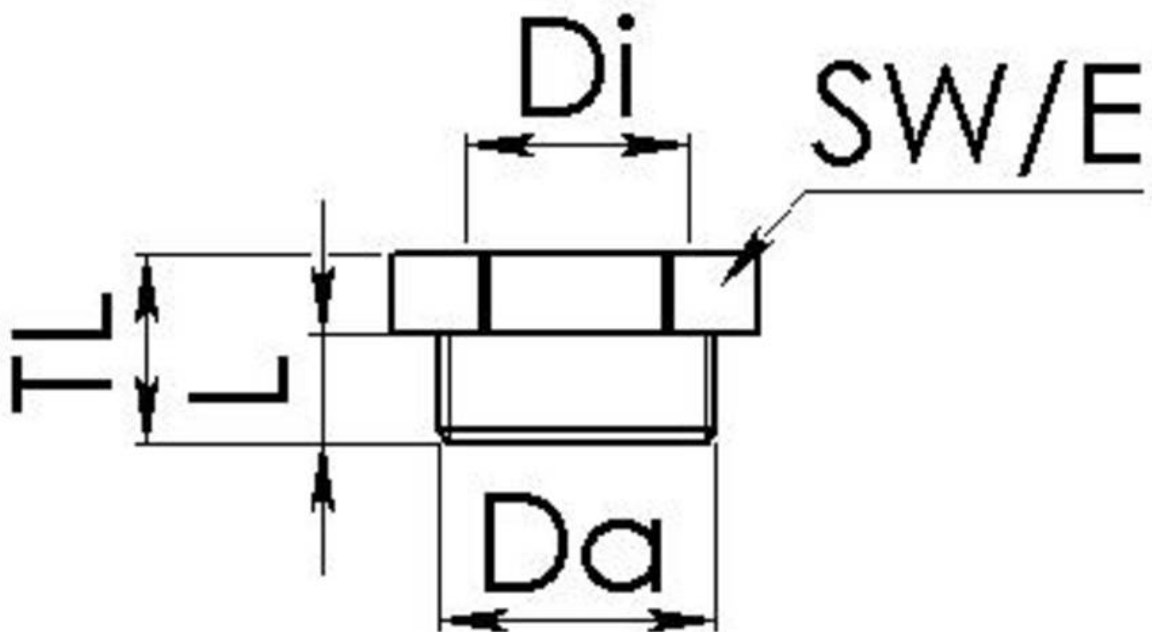
Your Contact:

WISKA Hoppmann GmbH

Kisdorfer Weg 28 · 24568 Kaltenkirchen · Germany

 +49-4191-508-0 ·  +49-4191-508-209

contact@wiska.de · www.wiska.com



Your Contact:

WISKA Hoppmann GmbH

Kisdorfer Weg 28 · 24568 Kaltenkirchen · Germany

☎ +49-4191-508-0 · 📠 +49-4191-508-209

contact@wiska.de · www.wiska.com